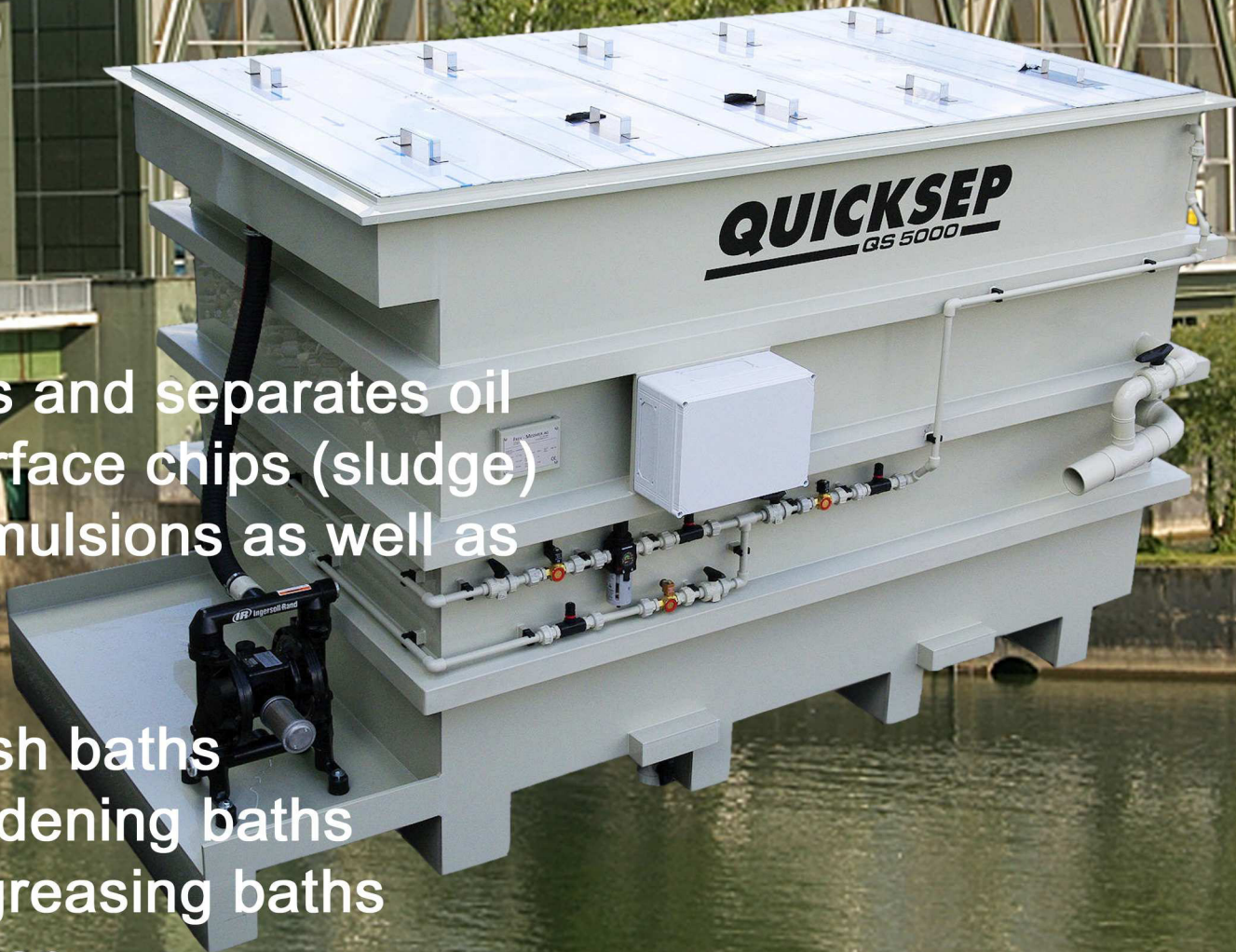


QUICKSEP® L5048

Large coolant cleaner (Oil separator)



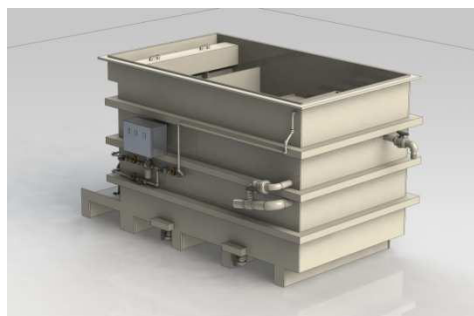
Aerates and separates oil and surface chips (sludge) from emulsions as well as from:

- Wash baths
- Hardening baths
- Degreasing baths
- Water

Available in various sizes up to 5000 l / h

The consequent application of different physical laws in the separator type **QUICKSEP L5048** as well as the optimal combination of the suction float and the pump are responsible for the very high separation efficiency of these units.

The unwanted and free oils are thoroughly separated from all contaminated fluids such as metal cutting emulsions, wash baths, hardening baths etc. The clean medium from which the unwanted oils have been separated flows back to the treatment tank by gravity. The separation performance lies at over 98% when demulsifying fluids are used.



Except for the pump and the motor there are no moving parts within the oil separator **QUICKSEP L5048**. Due to this fact maintenance costs are reduced to a minimum of rinsing the unit once or twice per year. The standard execution of the oil separator **QUICKSEP L5048** is delivered completely with oil tank and as well as feed and return tubes. For the aspiration in emulsion tanks a variety of suction floats are available to suit specific requirements. A prefilter, air sparger under the filter media bed etc. are available as options. All units are built for ambient temperature. Special reinforced units for temperatures over 40° up to 80°C are available on special request.

Technical data for stationary unit type QUICKSEP L5048 (mobile execution as option):

Dimensions:	Width	approx. 3'100 mm
	Depth	approx. 1'950 mm
	Height	approx. 1'850 mm
Volume:		approx. 2'850 litres
Net weight		approx. 2'000 kg
Pumping capacity nominal:		approx. 5000 l/h
Pumping capacity effective:		approx. 4800 l/h
Drive:	Air operated membrane pump (approx 4 bar, connections 1/2")	

Accessories

Suction floats:

Various standard floats are available ex stock. Specially designed floats to customers requirements can be manufactured on short turn.

